

CHARMILL

RESIDENTIAL

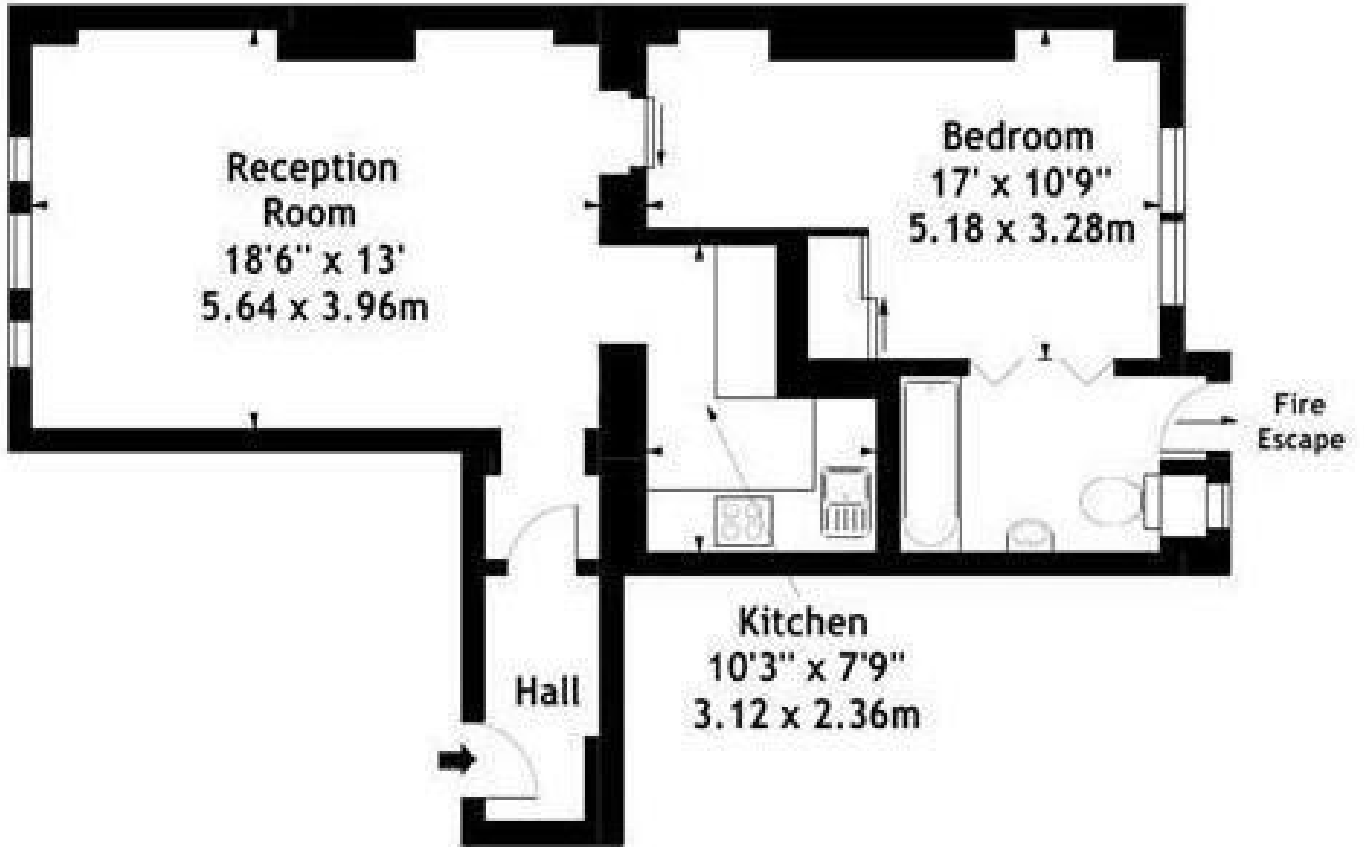


Maida Vale, Little Venice W9

A charming one-bedroom apartment arranged on the third floor within a very well maintained 24 hour portered mansion block in Little Venice. This superb apartment offers high ceilings and has been tastefully refurbished throughout, comprising a bright reception/dining room, separate fully fitted kitchen with appliances, one double bedroom with ample storage and an en suite bathroom. Rodney Court is located moments from the vast array of boutique shops, restaurants and cafes on Clifton Road and Elgin Avenue together with Maida Vale and Warwick Avenue stations (Bakerloo line). Paddington station is also within easy reach offering Circle, District, Bakerloo and Hammersmith & City lines together with National Rail services and the Heathrow Express providing access to Heathrow Airport in 15 minutes.

- 24 hour porter
- One bedroom
- Wooden flooring
- En suite bathroom

£525



Third Floor

Energy Efficiency Rating		Current	Potential
<i>Very energy efficient - lower running costs</i>			
(92 plus) A			
(81-91) B			
(69-80) C			
(55-68) D			
(39-54) E			
(21-38) F			
(1-20) G			
<i>Not energy efficient - higher running costs</i>			
England & Wales		75	81
	EU Directive 2002/91/EC		

Environmental Impact (CO ₂) Rating		Current	Potential
<i>Very environmentally friendly - lower CO₂ emissions</i>			
(92 plus) A			
(81-91) B			
(69-80) C			
(55-68) D			
(39-54) E			
(21-38) F			
(1-20) G			
<i>Not environmentally friendly - higher CO₂ emissions</i>			
England & Wales			
	EU Directive 2002/91/EC		

